

8 SAFETY GEAR**8.1 PROTECTIVE CLOTHING**

Protective clothing must be examined by a competent official of MNZ prior to being used in each competition event. The minimum standard of protective clothing for events shall be as follows in this chapter.

8.1.1 ENDURO and CROSS COUNTRY

- Safety Helmets - as per rule 8.2.
- Boots - as per rule 8.3.
- Jerseys - Heavyweight cotton or similar type fabric with long sleeves.
- Trousers - Long leather, nylon motocross, heavy worsted (e.g. army type).
- Gloves - Compulsory.
- Goggles - at the choice of the rider.
- Body Armour - Must be a commercially available brand that covers chest and back areas of the body.

8.1.2 MOTO-CROSS, MINIATURE TT, GRASS HILL CLIMBS AND GRASS TRACK:

- Safety Helmets - as per rule 8.2.
- Boots - as per rule 8.3.
- Jersey - Heavyweight cotton or similar type fabric with long sleeves.
- Trousers - Long leather, nylon motocross, heavy worsted (e.g. ex army type).
- Gloves - Compulsory.
- Goggles - at the Stewards discretion.
- Knee Pads & Braces - Recommended / or at riders choice.
- Body Armour - Must be a commercially available brand that covers chest and back areas of the body.

8.1.3 ROAD RACING, ROAD HILL CLIMBS & RECORD ATTEMPTS :

- Safety Helmets - as per rule 8.2.
- Boots - as per rule 8.3.
- Clothing - Complete suits of leather or Kevlar.
- Back Protectors - Must be a commercially available brand. Constructed from high density foam (or similar).
- Gloves - Leather only is approved.
- Eye Protection - as per rule 8.2.10.

8.1.4 SPEED EVENTS:

- Safety Helmets - as per rule 8.2.
- Boots - as per rule 8.3.
- Jackets - Leather or Kevlar.
- Trousers - Long leather, nylon motocross, heavy Worsted (e.g. ex Army type)
- Gloves - Compulsory.
- Goggles - at the Stewards discretion.

8.1.5 MOTO TRIALS:

- Safety Helmets - a motorcycle helmet is compulsory.
- Boots - as per rule 8.3.
- Jerseys - at choice of the rider.
- Trousers - at choice of the rider.
- Gloves - at choice of the rider.
- Goggles - at choice of the rider.

8.1.6 MINI MOTOCROSS:

- Safety Helmets - as per rule 8.2 with an open face helmet recommended.
- Boots - as per rule 8.3.5
- Jersey - Heavy weight cotton or similar type fabric with long sleeves.
- Trousers - Long leather, nylon motocross, heavy worsted, heavy corduroy or heavy denim (jeans).
- Gloves - Compulsory.
- Goggles - at the steward's discretion.
- Body Armour - Must be a commercially available brand that covers chest and back areas of the body.

8.1.7 BEACH RACING

- Safety Helmets - per rule 8.2
- Boots - per rule 8.3
- Jackets/Trousers - Leather, Kevlar, Nylon Motocross, Nylon/Motorcycle PVC wet weather gear.
- Gloves - compulsory (motorcycle types only)
- Eye Protection - per rule 8.2.10
- Body Armour - Must be a commercially available brand that covers chest and back areas of the body.

8.1.8 NON SPEED EVENTS

- Sealed surfaces - As per 8.1.4
- Non-sealed surfaces - As per 8.1.2
- Body Armour - Must be a commercially available brand that covers chest and back areas of the body.

8.2 HELMETS

8.2.1 Helmets shall be compulsory at all MNZ permitted events including Official Practice. These helmets will meet the requirements of 8.2.2

8.2.1.1 At all MNZ sanctioned events approved design helmets will be worn when any rider or passenger is astride a machine which is in motion, whether these be 2.3 or 4 wheeled, except for the official "Ride By", which precedes the racing proper. This will take place at a slow and sedate speed behind the Start Car for Road and Street Racing, and behind a responsible person for all other events.

Any rider guilty of abusing this “ride by” with inappropriate riding style such as wheel stands and jumps, can, at the discretion of the Meeting Steward, be banned from competing at that meeting and no entry fee will be refunded.

8.2.2 COMPETITION HELMET STANDARDS:

All new helmets available in New Zealand are manufactured overseas. These are made to various standards. The following standards acceptable for helmets for us in MNZ events.

Road & Off Road AS/NZS 1698:2006

Road

Europe ECE 22-04 or 22-05, 'P'

Japan JIS T 8133 : 2000

USA SNELL M 2000 or M 2005

Only helmets of single shell construction are permitted for road racing events. Two piece or flip top helmets may be used for have-a-go or track introduction days.

Off Road

Europe ECE 22-04 or 22-05, 'P', 'NP' or 'J'

Japan JIS T 8133 : 2000

USA SNELL M 2000 or M 2005

For International events the following standards apply.

Road

Europe ECE 22-05, 'P'

Japan JIS T 8133 : 2000

USA SNELL M 2005

Off Road

Europe ECE 22-05, 'P', 'NP' or 'J'

Japan JIS T 8133 : 2000

USA SNELL M 2005

8.2.2.1 All helmets manufactured, as evidenced by the manufacturers date of manufacture labeling, more than 10 years prior to the date of an event may be impounded under the terms of rule 8.2.5. Where no date of manufacture is visible on the helmet the onus is on the competitor to prove that the helmet is less than 10 years old.

8.2.3 Helmets manufactured with standards other than those approved can only be used in competition after approval by MNZ.

8.2.4 Approval will be given upon receipt of a certificate from the Standards Association of New Zealand or a competent authority (recognised by MNZ) stating that such a standard meets one of the approved standards.

- 8.2.5 The Steward or his/her deputy is empowered to impound any helmet considered of insufficient standard or, if of approved design, in a damaged or unsound condition.
- 8.2.6 Only helmets with a strap retaining system are permitted.
- 8.2.7 Each competitor will be required to prove good fit of his/her helmet.
- 8.2.8 All helmets, regardless of approved marks, must provide temple protection (commonly known as `Jet` or `Open Face` or `Full Face`).
- 8.2.9 Helmet peaks, if worn, must be of flexible material attached by press studs, straps, plastic screws, or tape. The peak must be capable of being torn from the helmet in the event of an accident. Helmets provided with metal screw attachments as original will be accepted, as well as metal screw replacements, provided the original mounting in the helmet is not modified in any way.
- 8.2.10 Face shields must be of an approved flexible plastic or moulded material. Perspex face shields are not permitted.
- 8.2.11 No helmet will be drilled, screwed or taped other than as per original manufacture, or helmet manufacturers instructions. The rider is required to provide proof that it is a helmet manufacturers instruction.
- 8.2.12 Polycarbonate helmets that have been painted are banned from use in competition.
- 8.2.13 CARE OF YOUR HELMET
YOUR POLYCARBONATE HELMET MUST NOT BE PAINTED.
Make sure your helmet is not subject to solvents or fuel in storage or transport to and from and during meetings.
Solvents of any kind must not be used to clean your helmet – use soap and water.
Any sticker should only be placed on a helmet by using the adhesive provided on the sticker.
Do not place your helmet where it can be subject to sunlight, e.g. car windows, etc.

MNZ strongly recommends, on advice from manufacturers, that you do not use a helmet for more than three years.

Make sure your helmet is not dropped, or subjected to abuse in any way. If this happens have it re-examined by a qualified person or replace it.

INTERNATIONAL HELMETS STANDARDS

NORMES INTERNATIONALES DES CASQUES

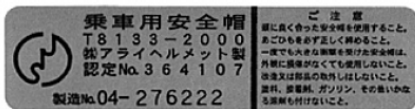
ECE 22 - 05 "P" (EUROPE)

The ECE mark consists of a circle surrounding the letter E followed by the distinguishing number of the country which has granted approval.

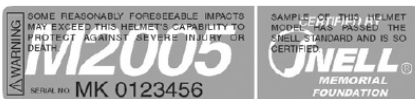
E1 for Germany, **E2** for France, **E3** for Italy, **E4** for Netherlands, **E5** for Sweden, **E6** for Belgium, **E7** for Hungary, **E8** for Czeck Republic, **E9** for Spain, **E10** for Yugoslavia, **E11** for UK, **E12** for Austria, **E13** for Luxembourg, **E14** for Switzerland, **E15** (- vacant), **E16** for Norway, **E17** for Finland, **E18** for Denmark, **E19** for Roumania, **E20** for Poland, **E21** for Portugal, **E22** for the Russian Federation, **E23** for Greece, **E24** for Ireland, **E25** for Croatia, **E26** for Slovenia, **E27** for Slovakia, **E28** for Bielo Russia, **E29** for Estonia, **E30** (- vacant), **E31** for Bosnia and Herzegovina, **E32** for Letonie, **E34** for Bulgaria, **E37** for Turkey, **E40** for Macedonia, **E43** for Japan, **E44** (- vacant), **E45** for Australia, **E46** for Ukraine, **E47** for South Africa, **E48** New Zealand.



Below the letter **E**, the **approval** number should always begin with 05. Below the approval number is the serial production number. (Label on retention system or comfort interior).



(JAPAN) JIS T 8133 : 2000
(Label affixed inside the helmet).



(USA) M2005
(Label affixed inside the helmet).

8.3 FOOTWEAR

- 8.3.1 For speed events, boots must be well constructed, either all leather or leather uppers or leather substitute and solid rubber sole not less than 25cm from the inner sole to the top of the boot.
- 8.3.2 Scott, Vendramini and Heckle plastic motorcycle competition boots and Sidi nylon competition boots are also approved for competition.
For non-speed events such as Trials and Gymkhanas, rubber reinforced safety boots (fireman's type) having a steel reinforcing within the sole are an option to the above.
- 8.3.4 Road racing sidecar passengers are required to wear footwear to a minimum of gym type boots (i.e. affording ankle protection).
- 8.3.5 For Mini Motocross, a purpose manufactured motocross boot is recommended, but a sturdy leather or gumboot (at least 200mm high) is acceptable.